

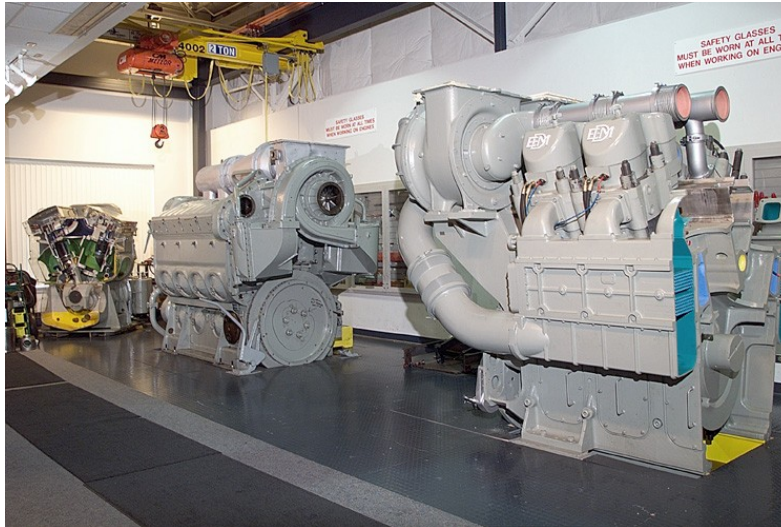


Valley
POWER SYSTEMS, INC.

AUTHORIZED DISTRIBUTOR
ELECTRO-MOTIVE

11300 Inland Ave., Mira Loma, CA. 91752 Ph: (951) 681-9283 or (800) 439-7595, Fax: (951) 360-4637

EMD Customer Training Center 2010 Power, Marine & Industrial Class Schedule



POWER, MARINE & INDUSTRIAL EMD ENGINE TECHNICAL

February 1-4, 2010
March 1-4, 2010
April 19-22, 2010
June 14-17, 2010

July 12-15, 2010
August 2-5, 2010
October 18-21, 2010
November 8-11, 2010

COST PER STUDENT @ EMD: \$979.00

Course # TCEN0004 15 Students Max.

If taking PMI EMD Engine Technical and PMI EMD Engine Practical:

Course # TCEN0010 at \$2,060

This course provides students with interactive instructions for the EMD roots-blown and turbocharged engines. Course contents include a study of all major engine components, assemblies, systems, and technical data limits required to operate and maintain an EMD engine in a Power, Marine and Industrial application. The performance-based program incorporates informative oral presentations and demonstrations on an EMD diesel engine. Hands-on activities and interactive discussions give the student a practical background in the basic repair, operation, maintenance, and troubleshooting of the EMD engine. The technical engine course is designed for technical personnel, mechanics, managers and all other personnel responsible for the efficient operation of the EMD engine. Participants should have a working knowledge of basic mechanics.

City of Industry, Main Office
425 So. Hacienda Blvd., City of Industry CA. 91745
Ph: (626) 333-1243 Fax: (626) 369-7096

www.valleypowersystems.com

San Diego Branch
5725 Eastgate Drive San Diego, CA. 92121
Ph: (858) 587-8524 Fax: (858) 587-4664

Distributor for: Detroit Diesel • Deutz Corporation • Allison Transmission • Electro-Motive • Volvo Penta • Northern Lights/Lugger

POWER, MARINE & INDUSTRIAL EMD ENGINE PRACTICAL

February 8-12, 2010

March 8-12, 2010

April 26-30, 2010

June 21-25, 2010

July 19-23, 2010

August 9-13, 2010

October 25-29, 2010

November 15-19, 2010

COST PER STUDENT @ EMD: \$1,185.00

Course # TCEN0005 10 Students Max.

If taking PMI EMD Engine Technical and PMI EMD Engine Practical:

Course # TCEN0010 at \$2,060

This course presents a controlled learning environment in which to apply maintenance practices. It provides both in-depth study and hands-on experience in tasks such as power assembly change-out, engine timing, and accessory gear train build-up. Emphasis is on actual performance of selected task activities in a laboratory-training environment. This course covers installation, inspection, and qualification of components. Ample technical information and hands-on training, combined with oral presentations, gives the student a solid background in advanced maintenance procedures and repairs. Advanced troubleshooting, parts identification and ordering, engine modification, and upgrades are covered.

*****Completion of the Engine Technical course is a prerequisite to attending the Engine Practical course*****

TURBOCHARGER INSPECTION/ REPLACEMENT

June 7-9, 2010

October 4-6, 2010

COST PER STUDENT @ EMD \$670

COURSE # -TCEN0006 10 Students Max.

If taking Turbocharger Inspection/Replacement and Rotating Equipment Alignment:

Course # TCMI0003 at \$1,082

This three-day class provides extensive troubleshooting and failure diagnoses as well as hand-on experience with EMD Turbocharger removal and replacement. OEM guidelines and procedures are covered in this course, which is intended for experienced mechanical staff. The Turbo change out portion of the class is three (3) days. In addition to the turbocharger course, we offer a two (2) day Rotating Equipment Alignment class. They can be taken separately as two courses or as a combined class.

ROTATING EQUIPMENT ALIGNMENT

**June 10-11, 2010
October 7-8, 2010**

COST PER STUDENT @EMD \$515.00

COURSE # - TCM10002 10 Students Max.

***If taking Turbocharger Inspection/Replacement and Rotating Equipment Alignment:
Course # TCM10003 at \$1,082***

This two-day class covers the principles of alignment between two rotating components using the EMD issued Maintenance Instruction. It includes hands-on instructions of aligning of components as it applies to the EMD Engine and Main Generator and Engine and Air Compressor coupling. In addition to the rotating equipment course, we offer a two (2) day Turbocharger Inspection/Replacement class. They can be taken separately as two courses or as a combined class.

ELECTRO-MOTIVE DIESEL ENGINE CONTROL

**February 5, 2010
March 5, 2010
April 23, 2010
June 18, 2010**

**July 16, 2010
August 6, 2010
October 22, 2010
November 12, 2010**

COST PER STUDENT @EMD \$464.00

CLASS # - TCEN0011 15 Students Max.

This course presents a learning environment to understand EMDEC, which is an acronym for the Electro Motive Diesel Control System. EMDEC equipped engines utilize an electronic fuel injection system which replaces the mechanical style of earlier models. An EMDEC equipped engine is capable of increased performance and lower emissions due to the real time feedback and immediate computer response to the fluctuating parameters of an operating engine. This course will provide the student a solid workable knowledge of the EMDEC System; its components, operation, principles, trouble shooting, diagnostics, simulations and component evaluations.

GENERAL INFORMATION & ENROLLMENT

Eligibility: Classes are open only to employees of customer firms owning Electro Motive products.

Location: All classes will be held at the EMD Training Center in LaGrange, IL.

Cost: Class cost is per the fee schedules listed in the course schedule. Whether you make a payment by check or issue a Purchase Order, it must be received by Valley Power Systems no later than 2 weeks before the class starts.

For classes that a student has paid for and finds they will not be able to attend and advises Valley Power Systems by phone or email 3 days or earlier will receive an 80% Refund. If Valley receives no notification from the student or their company that they will not be attending class.....there will be NO REFUND.

Accommodations: Lodging, transportation and subsistence expenses are the responsibility of the student or the employer. Lunch will be provided Monday through Thursday for classes held at EMD.

Registration: A responsible officer of a customer firm owning Electro Motive products should make registration requests through Valley Power Systems.

**TO ENROLL IN ONE OF THESE CLASSES, PLEASE CONTACT
VALRE HOLMAN USING ONE OF THE FOLLOWING METHODS:**

- ◆E-mail: valre.holman@valleypsi.com
- ◆Phone: (951) 681-9283
- ◆Fax: (951) 360-4637

